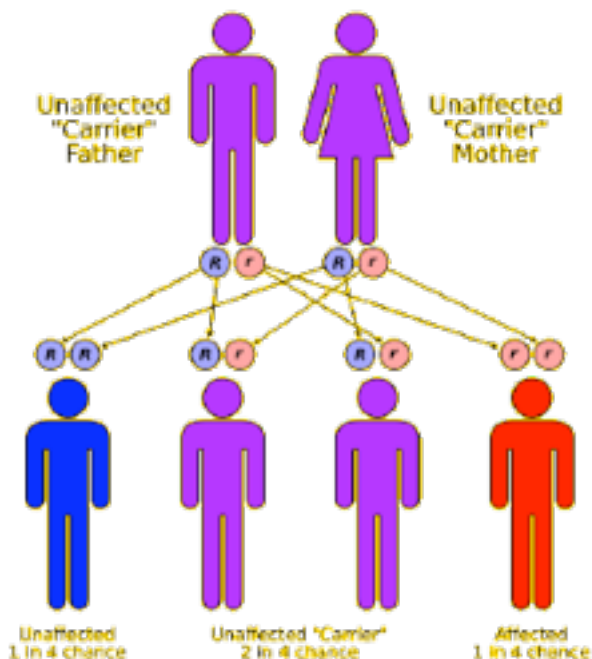


Cerebellar Abiotrophy

by Jennifer Hurt

Cerebellar Abiotrophy, (CA), is a serious disease found almost exclusively in 30% of all Arabian horses. This means that 30% of all Arabians are “carriers” of this disease, which will produce an affected foal 25% of the time when two carriers are bred.



N/N = Normal (clear)

CA/CA = Affected

N/CA = Carrier

N/N x N/N = Clear 100%

N/N x N/CA = Clear 50%, Carrier 50%, Affected 0%

N/CA x N/CA = Clear 25%, Carrier 50%, Affected 25%.

If a slightly affected and unrecognized horse is used for breeding : (which happens)

N/N x CA/CA = Clear 0%, Carrier 100%, Affected 0%.

N/CA x CA/CA = Clear 0%, Carrier 50%, Affected 50%.

(Info by foal.org)

Background Info:

Cerebellar Abiotrophy is a neurological disease, most often noted in newborn foals of approximately 3 weeks to 4 months of age. The most notable symptoms are a palsey-like head shaking (called intention tremors), the lack of a normal blink response although vision is correct, and an awkward exaggerated form of action with the forelimbs often similar to a military goose-step or high elevation used to cross over a very low object called hypermetric action. As these affected foals will often run into things or fall down- sometimes causing head injuries, their condition can be misdiagnosed as injuries from a blow to the head or neck, making the true neurological condition go unnoticed.

Cerebellar Abiotrophy (CA) is being recognized in all bloodlines of the arabian horse. Suspected to be an autosomal recessive defective allele, it can be passed forward through several generations without re-appearing. It is not a lethal gene. It does however make the horse generally unfit for riding or driving. Most affected horses are euthanized before they cause severe damage to themselves or to their handlers because of their inability to control their own balance.

(By Lisa of Szed Arabians).

What can you do about it?

Have your horses tested if you plan to breed that horse. The test is done by testing hair and cost \$50 per horse. <http://www.vgl.ucdavis.edu/services/horse.php>

Results of the CA screening test are reported as:

N/N: Normal. Horse does not possess markers associated with CA.

N/CA: Carrier (1 copy of the CA gene). Horse has markers associated with CA and is considered to be phenotypically normal and a carrier of the disease gene.

CA/CA: Affected (2 copies of the CA gene). Horse has markers associated with CA and is considered to have the disease.

For more information, please visit:

<http://www.vgl.ucdavis.edu/services/horse.php>

and/or

<http://www.foal.org/CerebellarAbiotrophy.html>

Lets all be responsible breeders.